

EDUCATION AND TRAINING PAY

UNEMPLOYMENT RATE IN 2011

15% 10% 5% 0

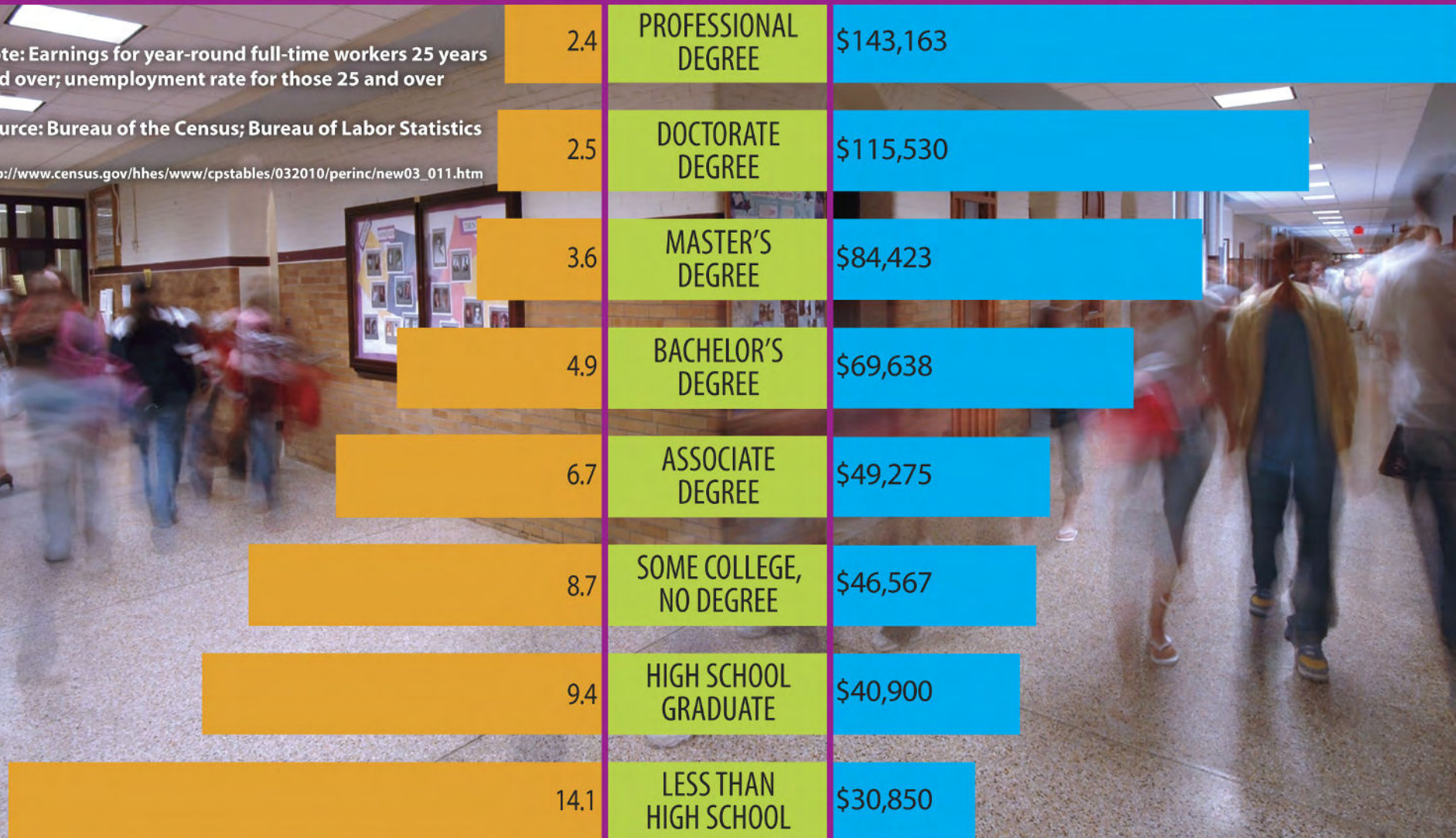
MEAN EARNINGS IN 2010

0 20 40 60 80 100 120 140 160

Note: Earnings for year-round full-time workers 25 years and over; unemployment rate for those 25 and over

Source: Bureau of the Census; Bureau of Labor Statistics

http://www.census.gov/hhes/www/cpstables/032010/perinc/new03_011.htm



**EDUCATIONAL ATTAINMENT
FOR PERSONS 25 YEARS AND OVER
FOR UNITED STATES, TENNESSEE, AND
DSCC SERVICE AREA COUNTIES**

Percent for Category	*USA	*TN	***DSCC Area	**Crockett	*Dyer	*Gibson	**Lake	*Lauderdale	*Obion	*Tipton
Less than 9th grade	6.2%	6.5%	8.34%	7.8%	8.5%	7.9%	13.1%	8.0%	7.4%	5.7%
9th to 12th grade, no diploma	8.5%	10.3%	14.36%	15.4%	12.2%	11.1%	20.8%	17.0%	13.4%	10.6%
Total % w/o Diploma	14.70%	16.80%	22.71%	23.20%	20.70%	19.00%	33.90%	25.00%	20.80%	16.30%
Total % with High School Diploma or Higher	85.3%	83.2%	77.31%	76.8%	79.3%	81.0%	66.1%	75.0%	79.2%	83.8%
High school graduate (includes equivalency)	28.4%	33.0%	41.59%	43.6%	39.5%	38.7%	43.1%	45.5%	41.8%	38.9%
Some college, no degree	21.3%	21.1%	18.83%	17.5%	17.4%	22.0%	15.5%	15.1%	20.8%	23.5%
Associate's degree	7.6%	6.1%	4.59%	3.5%	6.1%	5.0%	2.3%	3.0%	4.6%	7.6%
Bachelor's degree	17.6%	14.8%	8.61%	8.3%	11.0%	11.5%	3.6%	8.3%	7.8%	9.8%
Graduate or professional degree	10.4%	8.1%	3.71%	3.9%	5.3%	3.8%	1.5%	3.2%	4.3%	4.0%
Total With Bachelor's Degree or Higher	28.0%	22.9%	12.33%	12.2%	16.3%	15.3%	5.2%	11.4%	12.1%	13.8%

*Data was compiled using 2008-2010 American Community Survey 3-year Estimates

**Data was compiled using 2006-2010 American Community Survey 5-Year Estimates

***Data was compiled using average of 7-county area