

# EDUCATION AND TRAINING PAY

## UNEMPLOYMENT RATE IN 2012

## MEAN EARNINGS IN 2011

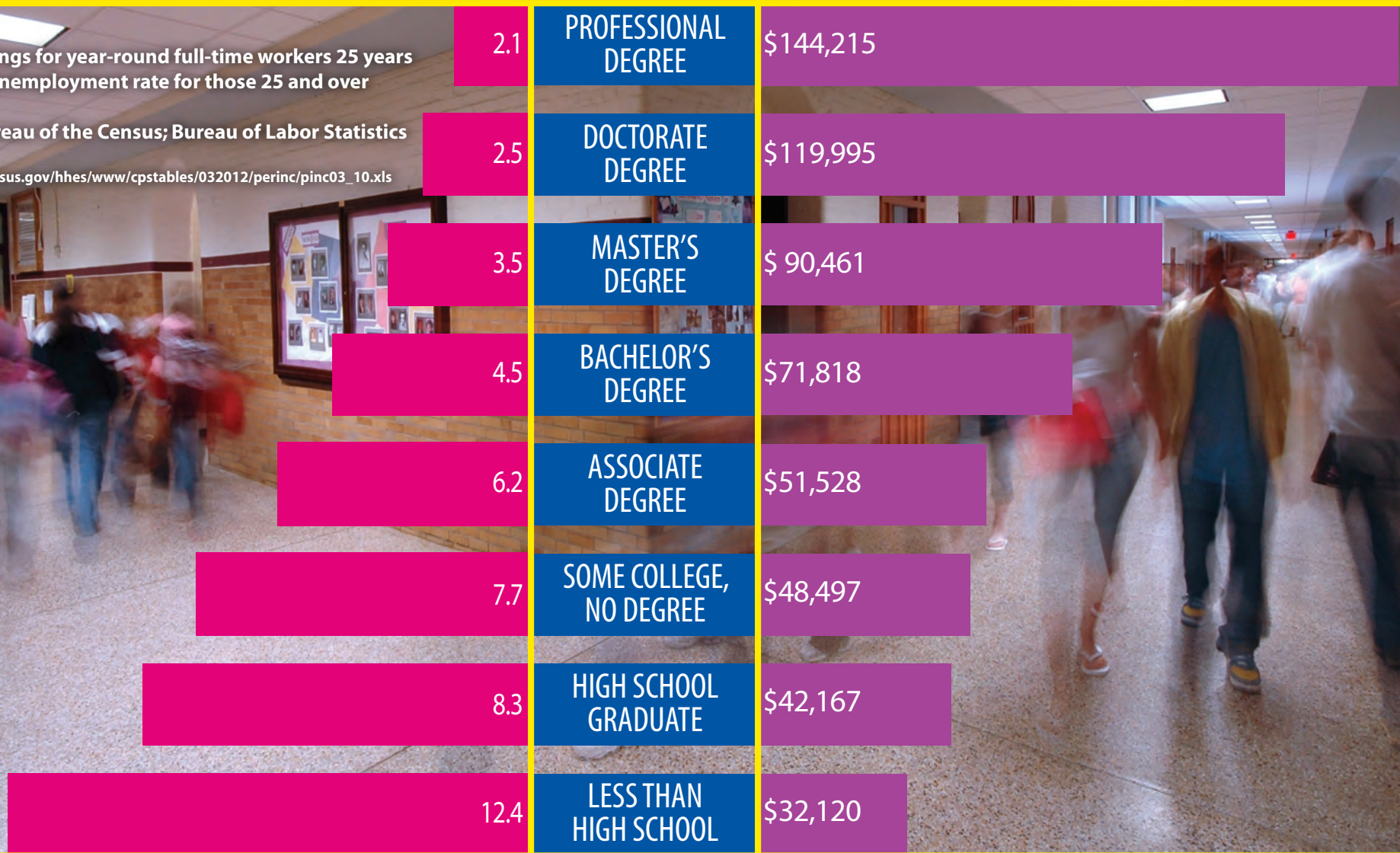
15% 10% 5% 0

0 20 40 60 80 100 120 140 160

Note: Earnings for year-round full-time workers 25 years and over; unemployment rate for those 25 and over

Source: Bureau of the Census; Bureau of Labor Statistics

[http://www.census.gov/hhes/www/cpstables/032012/perinc/pinc03\\_10.xls](http://www.census.gov/hhes/www/cpstables/032012/perinc/pinc03_10.xls)



**EDUCATIONAL ATTAINMENT  
FOR PERSONS 25 YEARS AND OVER  
FOR UNITED STATES, TENNESSEE, AND  
DSCC SERVICE AREA COUNTIES**

<b>Percent for Category</b>	<b>*USA</b>	<b>*TN</b>	<b>**DSCC Area</b>	<b>*Crockett</b>	<b>*Dyer</b>	<b>*Gibson</b>	<b>*Lake</b>	<b>*Lauderdale</b>	<b>*Obion</b>	<b>*Tipton</b>
Less than 9th grade	6.1%	6.5%	7.8%	7.5%	8.2%	7.4%	11.6%	8.1%	6.7%	5.4%
9th to 12th grade, no diploma	8.5%	10.3%	14.2%	15.9%	11.2%	11.6%	19.8%	17.3%	12.9%	10.5%
<b>Total % w/o Diploma</b>	<b>14.6%</b>	<b>16.8%</b>	<b>22.0%</b>	<b>23.4%</b>	<b>19.4%</b>	<b>19.0%</b>	<b>31.4%</b>	<b>25.4%</b>	<b>19.6%</b>	<b>15.9%</b>
<b>Total % with High School Diploma or Higher</b>	<b>85.4%</b>	<b>83.2%</b>	<b>78.0%</b>	<b>76.6%</b>	<b>80.6%</b>	<b>80.9%</b>	<b>68.6%</b>	<b>74.5%</b>	<b>80.4%</b>	<b>84.1%</b>
High school graduate (includes equivalency)	28.6%	33.3%	42.3%	43.0%	42.2%	39.4%	42.9%	45.1%	44.7%	38.7%
Some college, no degree	21.0%	20.8%	19.2%	18.6%	17.1%	21.5%	17.0%	15.9%	19.3%	24.7%
Associate's degree	7.6%	6.0%	4.3%	3.1%	5.5%	4.8%	2.5%	3.3%	4.0%	7.2%
Bachelor's degree	17.7%	14.9%	8.3%	8.1%	10.5%	10.8%	4.1%	7.7%	7.8%	9.2%
Graduate or professional degree	10.5%	8.1%	3.8%	3.7%	5.3%	4.4%	2.1%	2.5%	4.5%	4.3%
<b>Total With Bachelor's Degree or Higher</b>	<b>28.2%</b>	<b>23.0%</b>	<b>12.1%</b>	<b>11.8%</b>	<b>15.8%</b>	<b>15.2%</b>	<b>6.2%</b>	<b>10.2%</b>	<b>12.4%</b>	<b>13.4%</b>

\*Data was compiled using 2007-2011 American Community Survey 5-Year Estimates

\*\*Data was compiled using average of 7-county area